

CERTIFICATE OF LOCATION OF GOVERNMENT CORNER

NORTHWEST Corner of Section 14, Township 106N Range 43W, 5TH P.M.

STATE OF MINNESOTA, County of MURRAY

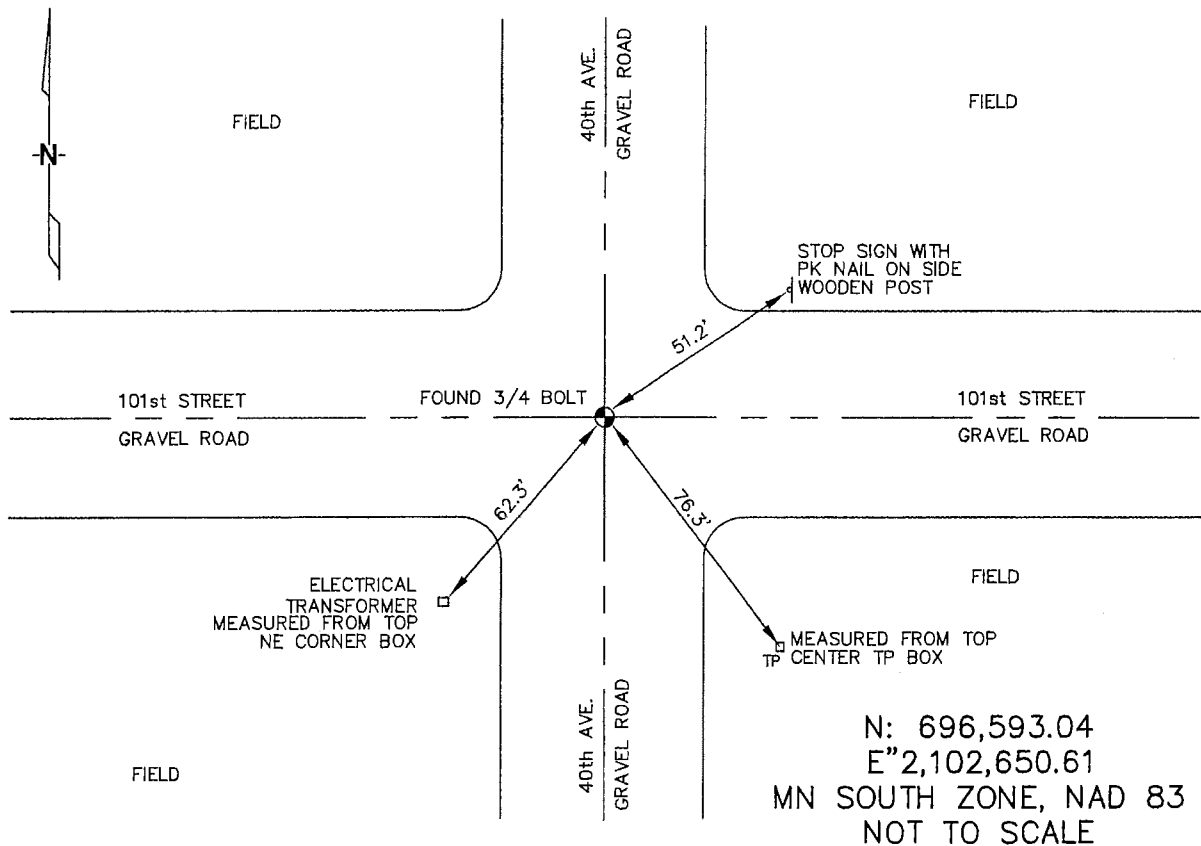
At the corner location shown on the sketch :

On 3/22/2006 found 3/4" BOLT, 4" DEEP, AT C/L INTERSECTION.

left monument as found, lowered monument, removed monument (explain)

On _____ set _____

Sketch of reference ties



Statement of evidence relative to this corner location is on back page

I hereby certify that this document and the data contained herein was prepared by me or under my direct supervision.

Thomas V. Zeff 5/22/06
 Thomas V. Zeff Date

Registration No. 44563

- Land Surveyor, Professional Engineer
 County Surveyor, County Engineer

OFFICE OF THE COUNTY RECORDER

County of _____

SEP 28 2006

I hereby certify that this document was filed in the Co. Recorders office at _____ .M. on the day of _____ A.D. , 20

County Recorder James V. Johnson
 By _____, Deputy

DOCUMENT NO. _____

STATEMENT OF EVIDENCE:

NORTHWEST CORNER, SECTION 14, T. 106 N., R. 43 W.,
MURRAY COUNTY, MINNESOTA

- 1866 J.W. Bishop, US. Deputy Surveyor. monumented corner.
- 10/17/1913 Murray Co. place a blue stone sharp on top 20" long, with small stones around; no ties.
- 3/1934 Murray Co. found stone.
Ties: NE-45.9' to tack in corner, fence post;
SW-48.9' to tack in corner, fence post;
NW-45.7' to tack in corner, fence post.
- ? Date MN DOT R/W Map for Trunk Highway 30, calls for the corner to be at the intersection of the trunk highway (east & west) and the road (north & south).
- 9/22/1969 Murray Co. found stone, placed an iron bolt, 3/4"X18" above stone;
Ties: SW-59.3' to nail & cap, in power pole;
NE-49.9' to nail & cap, in telephone pole.
- 3/22/2006 Ulteig Engineers, Inc., Survey Crew, Dennis Lavallie Party Chief, found a 3/4" bolt, 4" deep, in C/L intersection of gravel roads.
Ties: NE-51.2' to PK nail in wood, post of Stop Sign;
SE-76.3' to top, center of telephone pedestal;
SW-62.3' to NE corner of electrical transformer box.